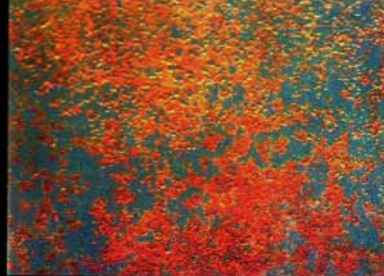




**Condition A
Unblasted**



**Condition B
Unblasted**



**Condition C
Unblasted**



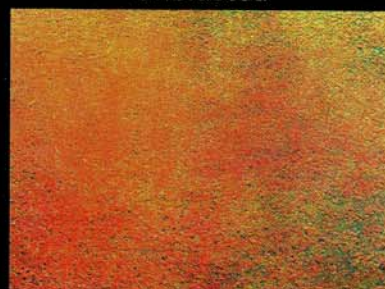
**Condition D
Unblasted**



**Condition A
Blasted to Sa1**



**Condition B
Blasted to Sa1**



**Condition C
Blasted to Sa1**



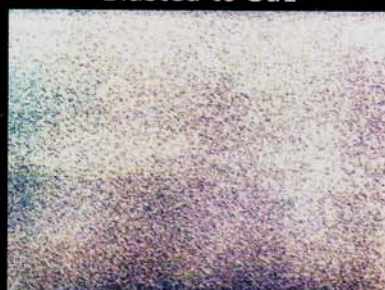
**Condition D
Blasted to Sa1**



**Condition A
Blasted to Sa2**



**Condition B
Blasted to Sa2**



**Condition C
Blasted to Sa2**



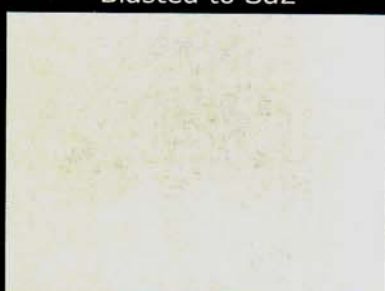
**Condition D
Blasted to Sa2**



**Condition A
Blasted to Sa2.5**



**Condition B
Blasted to Sa2.5**



**Condition C
Blasted to Sa2.5**



**Condition D
Blasted to Sa2.5**



**Condition A
Blasted to Sa3**



**Condition B
Blasted to Sa3**



**Condition C
Blasted to Sa3**



**Condition D
Blasted to Sa3**